

# SD200N

WILLING, CAPABLE AND LOADED



## NEW STYLE

- Applied new look with newly added LED lamp and Doosan decal, SD200N shows intense presence.

## OVERALL CAPABILITY

- Matching between transmission and torque converter ensures maximum engine power.
- The fixed wheel transmission boasts stable performance, high reliability, a low failure rate and conveniently agile operation.

## PROVEN SOLIDITY

- SD200N's advanced radiators enable lowering the hydraulic oil heat when equipment is in operation.
- All quick-wearing parts are equipped with wear-resistant sheaths. Doosan provides a good warranty policy and offer a one stop service.

## SAFETY PRIORITY

- Doosan places great emphasis on your safety. A combination of our safe cabin design, top-grade rubber shock absorbers, specialized cushion pads, and drive system with a patented anti-vibration technology ensures operator safety.

## SD200N STRENGTHENED CAPABILITY

### START MOTOR

The newly-changed start-up mode of the motor and the enlarged CCA (Cold Cranking Amperes) capacity make it easy to start the motor in low-temperature environments.

### ACCELERATION PERFORMANCE

The injection pump has undergone special debugging at a professional test bench and features greatly improved engine acceleration performance and speed.

### INDUSTRY-LEADING HYDRAULIC PARTS

The system improves work efficiency and durability. Double pump minimizes power loss and make full use of power and energy.

### PERFECTLY MATCHED POWER TRAIN

Engine, transmission and axles are optimized and finely tuned for each other and produce powerful traction force.

### THREE WORK MODES FOR EFFICIENCY

Operator can select a work mode considering work-load and fuel consumption for work.



### ENGINE (WP6G125E22)

The perfect blend of efficiency and power. The Weichai engine produces 92 KW at 2,200 rpm. High power and appropriate torque range enables to precisely deliver the stable working speed. Engine has undergone specific adjustments under different working conditions, consuming less fuel, accelerating faster and delivering more power.

## PROVEN TO LAST

### TRANSMISSION SHAFT

Double bearing supports propeller shaft in dual configuration. Lubricating oil can be infused easily, enhancing the durability.

### REINFORCED PIN BUSHING

To work best in the most severe work environment, diameter of 6 pins is thicker than competitors by 5 ~ 10 mm.

### RELIABLE HYDRAULIC COMPONENTS (MCV)

New solid main control valve has high precision machining, which lowers inside leakage and prolongs the service life.

### DURABLE AXLE DESIGN

More durable materials and technology are applied to machining gears.

### BUCKET STRENGTH

SD200N has improved bucket strength with use of high anti-abrasion materials and increased thickness.

### DURABILITY TEST

All vital components must pass extensive and stringent standard durability test.

### WEAR-RESISTANT SHEATH

All easily worn-out parts are equipped with wear-resistant sheaths. Doosan provides a good warranty policy and offer a one stop service

### COOLING SYSTEM

By improving the layout and materials of the heat-dissipation system, to aluminum plate fin-type.

## SD200N SIMPLIFIED MAINTENANCE

### EASY APPROACH

Maintenance windows have been added to each side of the engine hood. Making daily oil inspection and maintenance works quicker and more convenient.

### TRIPLE FUEL FILTER

Triple fuel filters protect engine and fuel system from low quality fuel and make engine life longer. Highest efficiency filters remove water, dust & particles to protect your investment optimally.

### LCD PANEL FOR ERROR CODE

LCD panel in the gauge panel shows error code and operator can recognize failures of the machine.

### AIR CLEANER FOR DUSTY ENVIRONMENT

Special air cleaner for extremely dusty environment is applied to prevent dust in the desert area from permeating into the engine.

### COOLING SYSTEM

Cooling system is readily accessible for clean out and maintenance routine.

### EASILY CHANGEABLE BREAK DISCS

The use of quick-change brake discs allows the user to check brake pads for excessive wear at any time and change the brake pads more easily without removing the tires.





## **SD200N** **COMFORT ON-BOARD**

### **CABIN COMFORT**

Ample space, wide visual field and intuitive features will guarantee a pleasant work. Cabin also reduces the noise and vibration significantly.

### **LED LAMP**

Existing two front lamps and two rear lamps have been upgraded with LED. New additional working lamp contributes to enhanced safety through improved visibility.

### **ADJUSTABLE STEERING WHEEL**

The adjustable steering wheel complies with ergonomic principles.

### **NEW OPERATOR PANEL**

The new instrument gauge panel has been changed simple and intuitively to put essential information right in front of the operator.

### **ERGONOMICALLY DESIGNED PEDALS**

The ergonomically designed pedals reduce fatigue and to lessen the load operator.

### **JOYSTICK LEVE**

Highly intuitive joystick lever enables easier and safer operations.

### **DELUXE SEAT**

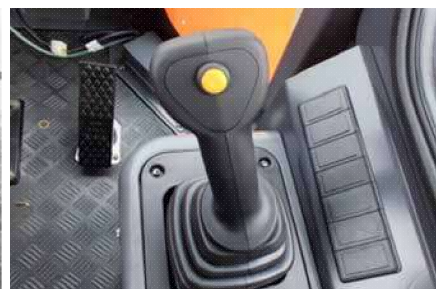
High back, deep-seated position, dual armrests and multi-level spring shock absorption guarantee a comfortable operation.

### **ROTATING BEACON (OPTIONAL)**

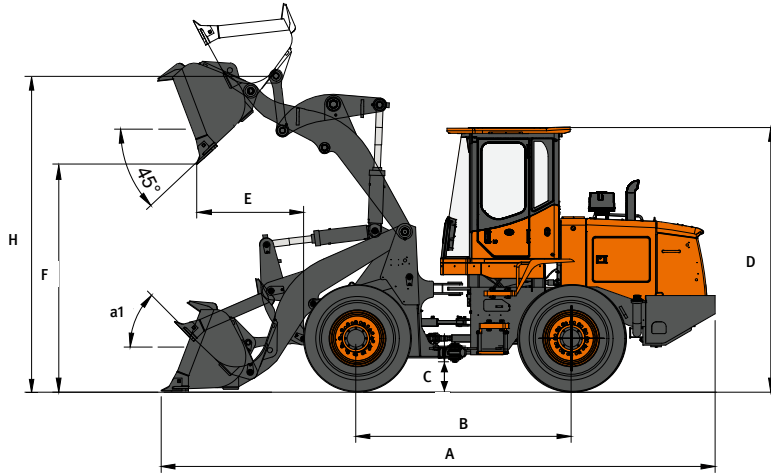
For enhanced safety rotating beacon is equipped SD200N as optional, which gives the warning alarm while driving

### **ALL AROUND VISIBILITY**

Improved visibility to the Left and right bottom section of the front windshield for easy positioning of front wheels.



# TECHNICAL SPECIFICATION (SD200N)



## ENGINE

Model	Weichai WP6G125E22 (Tier 2)
Rated Power (SAE J1995 Gross)	92 kW (125 PS) @ 2,200 rpm
Max. Torque (SAE J1995 Gross)	500 N.m @ 1,400~1,500 rpm
Number of cylinders/bores/strokes	6 / 105 mm / 130 mm
Displacement	6.7 L
Fuel Consumption	215 g/kW.h @ RATED SPEED

## TRANSMISSION

Type	4 speeds, power-shift, countershaft, engine remote mounted with propeller shaft & damper
Torque Converter Stall Ratio/Size	3.0 / 315 mm

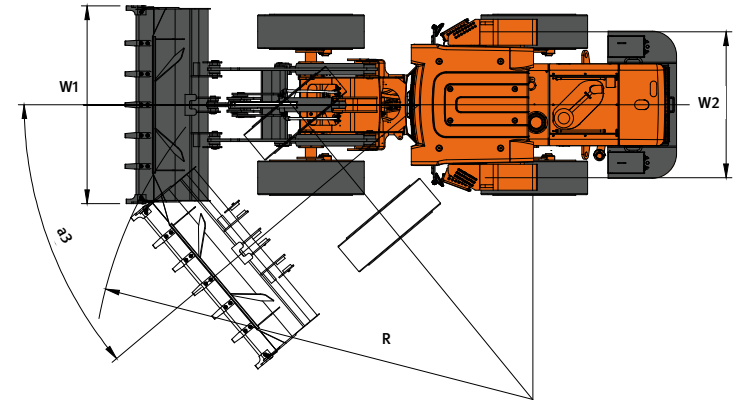
## HYDRAULIC SYSTEM

Main Pump Type	Fixed gear
Main Pump Displacement	100 cc/rev
Max. Flow Rate	215 l/min

## GENERAL SPECIFICATIONS

Operating Weight	10.3 ton
Bucket Capacity (SAE HEAPED)	1.7 m <sup>3</sup>
Payload	3,000 kg
Travel Speed (1/2/3/4)	8.5 / 13.0 / 24.0 / 37.0 km/h
Static Tipping Load (straight)	7,100 kg
System Pressure (Work/Steer)	170 / 140 kg/cm <sup>2</sup>
Sound Level in CAB (2000/14/EC)	84 dB (A)
External Sound Power Level (2000/14/EC)	112 dB (A)
Fuel Tank Capacity	155 L
Tire Size	17.5 - 25 - 12 PR

# DIMENSIONS & WORKING RANGE (SD200N)



ITEMS		UNIT	STD.	OPT 1	OPT 2	OPT 3	
Operating Weight		ton	10.3	10.37	10.42	10.44	
Bucket Capacity (SAE HEAPED)		m <sup>3</sup>	1.7	1.7	2.2	2.2	
Arm			STD.	LONG	STD.	LONG	
Breakout Force		kN	99	100.9	83.3	84.28	
Working Range	Overall Length	A	mm	6,990	7,150	7,010	7,170
	Overall Width	W1	mm	2,496	2,496	2,506	2,506
	Overall Height	D	mm	3,250	3,250	3,250	3,250
	Ground Clearance	C	mm	330	330	330	330
	Wheel Base	B	mm	2,700	2,700	2,700	2,700
	Tread	W2	mm	1,850	1,850	1,850	1,850
	Dump Height at 45° (with tooth)	F	mm	2,840	3,100	2,848	3,118
	Dump Reach at 45° (with tooth)	E	mm	1,240	1,134	1,270	1,160
	Max. Tilt Angle (on ground)	a1	degree (°)	45	45	45	45
	Max. Tilt Angle (fully raised)		degree (°)	60	60	60	60
	Max. Tilt Angle (at carry)		degree (°)	50	50	50	50
	Height at bucket pivot point	H	mm	3,770	4,040	3,770	4,040
	Digging Depth (0° level)		degree (°)	45	55	50	60
	Max. Steering Angle	a3	degree (°)	38	38	38	38
Turning Radius (tire center)		mm	5,050	5,050	5,050	5,050	
External radius at bucket edge	R	mm	5,540				
Gradeability		% (°)	58 (30)				